



VILLAGE OF BELLEDUNE

P.O. Box 1006 * 2471 Main Street * Belledune, NB * E8G 2X9 * Tel.: (506) 522-3700
Fax: (506) 522-3704 * e-mail: info@belledune.com Web Site: www.belledune.com

Invitation to Tender: Disposal of Floor Cleaning Machine

1. Introduction: The Village of Belledune is inviting sealed tenders for the disposal of a used floor cleaning machine, described below:

- **Item:** Floor Cleaning Machine
- **Description:** 18" Global Industries Auto Floor Scrubber, Model #641263. Equipment is currently non-functional, requires 2 replacement batteries.
- **Location:** 2471 Main St., Belledune, NB.

2. Tender Submission: Interested parties must submit their sealed tenders no later than **Friday, July 26, 2024 at 3:00pm**, clearly marked "Tender for Disposal of Floor Cleaning Machine," to the following address:

Village of Belledune
2471 Main St
Belledune, NB
E8G2X9
Attention: Chief Administrative Officer

All attempts will be made to be fair and transparent. Specifically bids such as "x dollars more than the highest bid" will be discarded as unfair competition and not transparent. All bids must use a specific dollar amount and must separate out the HST portion leading to a grand total.

3. Scope of Tender: The successful bidder will be responsible for:

- Pick up of the floor cleaning machine from the premises.
- Ensuring safe and environmentally friendly disposal methods of any floor cleaning machine components, if required.
- Any necessary transportation and handling of the machine.

4. Conditions of Tender:

- Tenders must be submitted in accordance with the instructions provided.
- The Municipality reserves the right to accept or reject any or all tenders.
- The Municipality will not be responsible for any costs incurred by bidders in the preparation and submission of tenders.
- The Municipality will not be responsible for any costs incurred by bidders for the transportation of the machine.

5. Inspection: Prospective bidders may inspect the floor cleaning machine by appointment. Please contact Landon Lee at 503-522-3703 to schedule a viewing.

6. Contract Award: The contract will be awarded to the bidder who meets the requirements specified and offers the most advantageous terms to the Municipality.

7. Closing Date: Tenders must be received no later than Friday, July 26, 2024. Late tenders will not be considered.

8. Disclaimer: The Municipality does not bind itself to accept the highest bid or any tender.

9. Opening of Tenders: Tenders will be opened promptly after the submission deadline at 2471 Main St., Belledune, NB.

10. Payment Terms: Payment must be made in full prior to the pick up of the machine.

11. Confidentiality: All information provided by the Municipality shall be treated as confidential and shall not be disclosed without prior written consent.

12. Closing: The Municipality reserves the right to cancel this tender at any time without liability to any bidder or potential bidder.

13. Enquiries: Enquiries regarding this tender should be directed to Landon Lee at 506-522-3703.

14. Acceptance of Terms: By submitting a tender, the bidder accepts all terms and conditions set forth herein.

Assembly Instructions	Instrucciones de Ensamblaje	Directives d'assemblage
Customer Service US: 1-800-645-2986	Servicio de atención al Cliente México: 01.800.681.6940	Service à la clientèle Canada: 888-645-2986



18" AUTO FLOOR SCRUBBER
Model #: 641263

TECHNICAL Specification	
Clean width	18"
Squeegee Width	30.7"
Work capacity	17000sq.ft/hr
Pressure on the brushes	84lbs
Brush RPM	180
Brush motor	24V/500W
Suction motor	24V/390W
Solution tank	12gallon
Recovery tank	15gallon
Machine dimensions (Excluding squeegee)	46" x 21.65 " x 38.39 "(L x W x H)
Battery	2 x 115ah
Battery weight	80lb x 2
Machine weight	211 lb

ORDER YOUR CLEANING CHEMICALS & PADS

Visit www.globalindustrial.com or call 1-800-645-1232

CLEANING CHEMICALS



PADS (Case of 5)

17" Scrubbing Pad- Model 281184GN
17" Buffing Pad- Model 281184RD



IMPORTANT INSTRUCTIONS

PLEASE READ THE INSTRUCTIONS CAREFULLY PRIOR TO USING THIS PRODUCT.

WARNING - to reduce the risk of fire, electrical shock, and/or injury/damage to persons or property:

- Do not operate the machine unless trained and authorized
- Flammable materials can cause an explosion or fire. DO NOT use flammable materials in tank or as cleaning agent in machine.
- Flammable materials or reactive metals can cause explosion or fire. DO NOT use to clean up flammable or combustible spills
- This machine is intended for commercial use. It is constructed for use in an indoor environment and is not intended for any other use.
- Extreme caution and supervision is necessary when used near children or unqualified personnel
- Conditions of use: room temperature between 0°C and 40°C with relative humidity between 30 and 95%.
- Do not place objects on the Unit or allow objects to obstruct the inlet or outlet openings. Do not operate in close proximity to walls, curtains, etc.
- Do not use acid solutions, which may damage the machine or harm the operator.
- Always turn off and unplug the battery prior to assembling, performing routine maintenance, or when not in use.
- The use of attachments or accessories is not recommended or sold by the Global Industrial may cause personal injury and/or property damage.
- DO NOT attempt to fix the machine by yourself. All repairs must be made by an authorized personnel
- Do not modify the machine
- Avoid moving parts. Do not wear loose fitting clothing while using/servicing the machine
- Do not put any flammable materials into solution tank. This can cause an explosion or a fire. Only use approved cleaning chemicals. Contact Global Industrial (1-800-645-1232) for recommendations on proper Cleaning Solutions.
- Empty the Solution and Recovery tank before storing the machine
- This machine shall be stored indoors only
- Do not use the machine on surfaces with an inclination greater than the one shown on the plate.

READ AND SAVE THESE INSTRUCTIONS

18" Auto Floor Scrubber

MACHINE COMPONENTS



- 1) Recovery tank cover
- 2) Recovery tank
- 3) Solution tank cap
- 4) Solution tank
- 5) Head Assembly
- 6) Pad Driver or Brush
- 7) Rubber Skirt
- 8) Wheel

- 9) Recovery tank Drain
- 10) water level indicator
- 11) Battery/Power plug
- 12) Squeegee Assembly
- 13) Vacuum hose
- 14) Head Assembly Pedal
- 15) Squeegee assembly Lever
- 16) Menu button

- 17) Suction button
- 18) Brush button
- 19) ON/OFF Key
- 20) Vacuum hole
- 21) Vacuum Intake
- 22) Float shut off
- 23) Battery

18" Auto Floor Scrubber

⚠ WARNING

⚠ WARNING

Do not operate machine unless you have read and understand this manual.

⚠ WARNING

Do not use your fingers to wipe or remove debris from the blades, as injury may occur.

⚠ WARNING

Flammable materials can cause an explosion or fire. DO NOT use flammable materials in tanks as cleaning agent.

⚠ WARNING

Always empty Recovery tank before filling solution tank

⚠ WARNING

Always empty and clean the recovery tank after using the machine.

⚠ WARNING

Do not fill the solution tank before emptying the recovery tank

⚠ WARNING

Before performing any maintenance on the machine, be sure that the power is turned off.

⚠ WARNING

Repairs are to be completed by Authorized Personnel/Service Centers only

⚠ WARNING

Do not put any flammable materials into solution tank. This can cause an explosion or a fire. Only use approved cleaning chemicals. Contact Global Industrial (1-800-645-1232) for recommendations on proper Cleaning Solutions.

⚠ WARNING

Foam must not enter the float shut-off screen, or damage can occur to the vacuum motor. Foam will not activate the machine's float shut-off device.

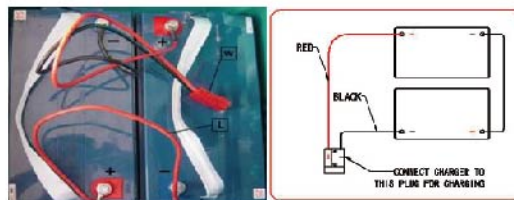
PACKAGE CONTENTS:

- 1)Machine 2)Squeegee Assembly 3)Pad Driver
4)Battery 5)Charger 6)Jump cable& batteries connector cable

MACHINE SET-UP/OPERATION PRIOR TO ACH USE

- 1)Be sure to connect the 24V battery
- 2)Check that squeegee assembly is properly installed
- 3)Check that Pad Driver is properly installed
- 4)The working surface is sufficient to support the weight of the machine
- 5)Always close Recovery Tank cover fully before use

CONNECTING THE BATTERIES



1. Connect the batteries in series - using the jumper cables supplied (L) - to the poles "+" and "-".
2. Connect the battery connector cable to the terminal poles "+" and "-" to obtain a voltage of 24V on the clamps.
3. Connect battery plug to the power plug.

BATTERY CHARGING



1. Disconnect the power plug;
2. Connect the battery plug to the charger ;
3. Connect the charger to the power supply.
 - Red ON or Flashing = Fault
 - Yellow Flashing = No battery connected
 - Yellow on = Normal charging
 - Green on = Fully charged

⚠ WARNING

Use only approved chargers with the following specifications

- Automatic shut off circuit
- Deep cycle charging
- Output current of 10-20 amps
- Output voltage of 24 volts

⚠ CAUTION

For the best performance, keep batteries charged at all times. Do not let them sit in a discharged condition.

⚠ WARNING

Do not place battery charger on wet surface or in a puddle when operating charger.

RISK OF EXPLOSION:

A highly explosive gas mixture is produced when charging batteries.

18" Auto Floor Scrubber

⚠ WARNING

- Battery acid is highly caustic, always wear protective gloves and eye protection.
- Do not tilt battery as otherwise acid may flow out of the vent openings.

⚠ WARNING

No fire, sparks, naked lights or smoking:

- Avoid creating sparks when handling cables and electrical equipment.
- Avoid short circuits.

⚠ CAUTION

Wear eye protection.

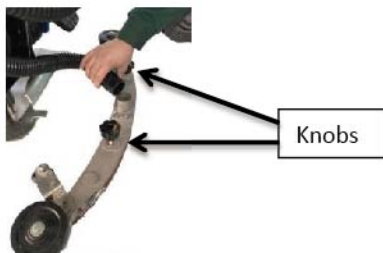
⚠ WARNING

Keep acid and batteries away from children.

⚠ WARNING

Batteries are dangerous! Batteries emit hydrogen gas and an explosion or fire can result. Keep sparks and fire away from batteries at all time . When charging the machine, make sure the battery compartment is left open.

SQUEEGEE INSTALLATION

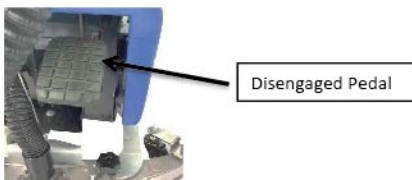


Loosen the 2 knobs on the squeegee assembly.
Connect the vacuum hose to the Vacuum hole in the squeegee assembly



Align the knobs with the slots and tighten the knobs

PAD DRIVER/BRUSH COUPLING



- Turn off the machine
- Place the pad driver/Brush under the head assembly.
- lower the head assembly to the floor by stepping on the foot pedal and

disengaging it

- Line up three studs on the pad driver/brush to the holes on the head assembly
- Turn on the machine
- Press the brush button , brush motor will start working, so that the pad driver/brush locks in completely

PAD DRIVER/BRUSH UNCOUPLING

Raise the head assembly by stepping on the foot pedal and engaging it , Long press "MENU" for more than 5 seconds after boot, Automatic unloading the brush.



Or turn off the power and wiggle the pad driver/brush back and forth ,clockwise/counterclockwise until it becomes loose.

- If using a pad driver, first attach the appropriate pad to the pad driver surface

SOLUTION TANK



Remove the solution tank cap and fill with clean water for regular cleaning surface. For deep and dirty surface, Contact Global Industrial (1-800-645-1232) for recommendations on proper Cleaning Solutions.



- Check water level indicator for water level

OPERATION

- Turn the Key to ON position

Display information when active:

Brand: GLOBAL

Software version: Ver .XX

Display information when work:

Battery level: ██████████ (flashing at low level)

Total functioning time: 00000: 00 (hour: minute)

Short press "MENU", shows the battery voltage.

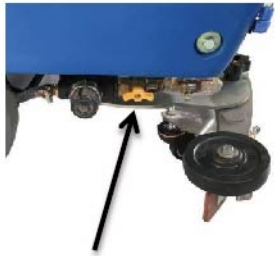


- Lower the head assembly to the floor by stepping on the foot pedal and disengage it, press the brush button, brush motor will start working.

18" Auto Floor Scrubber



- lower the squeegee assembly by lowering the squeegee assembly lever, press the vacuum button, vacuum motor starts working.



- Adjust the water flow with the water flow lever

- When finished,
- Press brush button again, brush motor will shut off, then raise the head assembly from the floor by stepping on the foot pedal and engage it.
- Raise the squeegee assembly by raising the squeegee lever, press vacuum button, vacuum motor will shut off after delay.

MAINTENANCE

⚠ WARNING

Before performing any maintenance on the machine, be sure that the power is turned off, or the batteries disconnected.

⚠ WARNING

Repairs are to be completed by authorized Service Centers only. Any repairs by unauthorized persons will void warranty.

Daily maintenance

- wipe the whole machine with clean/damp cloth



- Empty the solution tank by opening solution drain plug location on the bottom



- Drain and rinse out recovery tank with clean water



- Clean the vacuum filter by removing the vacuum intake cap
- Remove the Pad Driver/Brush and Squeegee assembly and Clean with clean water
- Check the battery charge, Timely charging

MONTHLY MAINTENANCE

- Flush out solution tank with clean water



- Remove the clear cap and the solution tank filter. Clean the filter with clean water



- Clean rubber skirt on the brush head assembly by removing the spring lock

- motors should be check every 250 hours. Turn on/ off both Pad/Brush and Vacuum motor to ensure the motors are working properly

SQUEEGEE RUBBER BLADE REPLACEMENT

- Remove the squeegee assembly from the unit (refer to squeegee assembly installation)



- Unlock the spring lock and slide out the blades
- Replace with new blade and re-assemble.

BATTERY MAINTENANCE

We are using maintenance-free batteries: High performance, long life, no pollution, maintenance-free, safe and reliable.

- Always follow the battery charging directions as outlined in the BATTERY CHARGING section of this manual
- Keep battery tops and terminals free from corrosion. A strong solution of baking soda and water is the best way to keep the batteries corrosion free. **DO NOT ALLOW THE BAKING SODA/WATER SOLUTION TO ENTER THE BATTERY CELLS.**
- Use a wire brush with the baking soda solution to properly clean the battery posts and connections
- Check battery connections for wear and loose terminals. Replace if necessary.

⚠ DISPOSAL

- Old batteries must be disposed of in compliance with the local specific regulations.
- Never dispose of old batteries as domestic waste!

MACHINE STORAGE

- store the machine indoor in a dry location
- always store the machine with the squeegee and pad/driver raised off the floor
- Always drain the solution and recovery tank fully before storing, especially when storing in a cold location

18" Auto Floor Scrubber

TROUBLE SHOOTING

Problem	Cause	Solution
No Power	-Unit not connect the power, batteries not charged	- Connect the battery, charge battery
Error code	<p>"Charging"</p> <p>"SuctionErr"</p> <p>"BrushErr"</p> <p>volttsErr"</p>	<p>symbol indicates Lack of electricity, please charge.</p> <p>symbol indicates a failure of suction motor. Please check the suction motor and its associated circuitry.(the intake of suction motor or recovery tank is blocked), may be Loss of electricity.</p> <p>symbol indicates a failure of brush motor. Please check the brush motor and its associated circuitry.</p> <p>symbol indicates the battery voltage exceeds 30 volts, please chech the battery and its associated circuitry.</p>
Little or no solution flow	<p>-Water flow tap closed</p> <p>-Clogged solution tank filter</p> <p>-Empty solution tank</p>	<p>-open water flow tap</p> <p>-clean solution tank filter</p> <p>-fill the solution tank</p>
Poor water pickup	<p>-Squeegee clogged</p> <p>-Squeegee blades worn</p> <p>-Squeegee not mounted correctly</p> <p>-Vacuum hose have a hole or is loose</p> <p>-Vacuum hose may be clogged</p> <p>- Drain hose stopper is loose</p> <p>- Recovery tank is opened</p> <p>-Recovery tank is full</p> <p>- Float shut off is clogged</p> <p>- Vacuum motor is loose</p>	<p>- Clean debris off squeegee with damp towel</p> <p>- Install new squeegee blades</p> <p>- Confirm that the squeegee assembly is securely fastened to the machine and not loose fitting</p> <p>- Check hose connections and make sure they are firm. Replace hose if damaged.</p> <p>- Check hose for debris and remove any clog.</p> <p>- Tighten drain plug.</p> <p>- Confirm the clear recovery tank lid is securely in place</p> <p>- Drain recovery tank</p> <p>- Remove float shut off from inside recovery tank and remove any debris</p> <p>- Tighten vac motor mounting screws. DO NOT overtighten or damage will occur.</p>